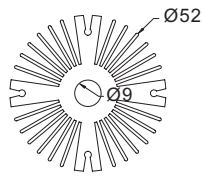
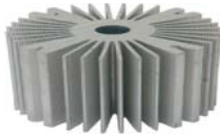


Widegerm Standard Heat Sink

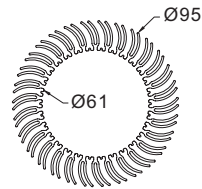


SK-C52A



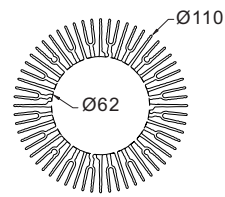
Material: High purity aluminium by extrusion
 Finish: Black anodize or sand blasting
 Recommend for **Citizen** 6W & **Bridgelux** 400lm arrays
 The length can be changed according to your actual need.

SK-C95A



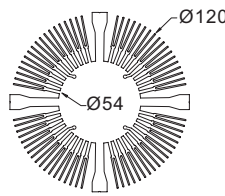
Material: High purity aluminium by extrusion
 Finish: Black anodize or sand blasting
 Recommend for **Citizen** 13W & **Bridgelux** 800lm arrays
 The length can be changed according to your actual need.

SK-C110A



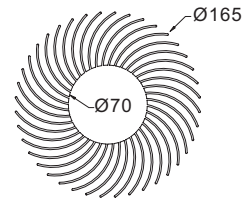
Material: High purity aluminium by extrusion
 Finish: Black anodize or sand blasting
 Recommend for **Citizen** 26W & **Bridgelux** 2000lm arrays
 The length can be changed according to your actual need.

SK-C120A



Material: High purity aluminium by extrusion
 Finish: Black anodize or sand blasting
 Recommend for **Citizen** 26W & **Bridgelux** 2000lm arrays
 The length can be changed according to your actual need.

SK-C165A



Material: High purity aluminium by extrusion
 Finish: Black anodize or sand blasting
 Recommend for **Osram** 2100/3000lm, **Philips** DLM 2000lm, **Citizen** 42W & **Bridgelux** 3000lm arrays
 The length can be changed according to your actual need.

SK-C905A
 OD113



Material: Alloy aluminium by die casting
 Finish: Black anodize, wet paint or sand blasting
 Recommend for **Edison** 9X1W

SK-C165B

Development for special designed heat sink for different reflectors and LED arrays

